



Coway

Bidet **BA07-R/E**

- This product can not be used if the voltage is different from that mentioned in the rating plate.
- For your safety and proper use of the product, please read this User's Manual before use.
- Warranty card is included in this User's Manual.



FEATURES

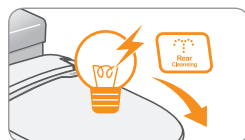
1. WIDE function

Users can select the degree of the cleansing water spreading directly as the wanted step from the strong force of the flowing water to the softly spreading water.



2. Special function for the customer's convenience

- Power saving mode : Helps lower the utilities bill.
- Seat sensor lock mode : In seat sensor lock mode, as rear cleansing, front cleansing, and air dryer will not work without the user sitting on the seat, it prevents the operating malfunctions due to children's unintended button inputs.



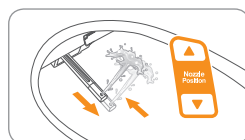
3. Self-diagnostic function

In the case there is an abnormality in the product function, the indicators on the control panel blink to indicate the abnormality.



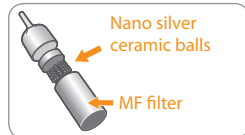
4. Nozzle position adjustment

The user can adjustment the nozzle position back and forth according to his own body shape (See P.12).



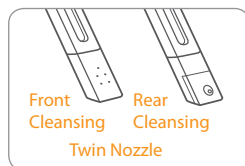
5. Nano silver ceramic MF filter

With the MF filter applied to the bidet, you can always cleansing with the filtered clean water.



6. Cleanliness strengthening function

- As the rear cleansing nozzle and the front cleansing nozzle are separated, it is a hygienic.
- It keeps the nozzle cleanly through an automatic nozzle cleaning after using the rear cleansing/front cleansing function.



DEAR CUSTOMERS

Thank you for using our **Coway Bidet**.

Please read this User's Manual to use and maintain the product correctly.

If you encounter a problem while using the product, you may solve the problem referring to the User's Manual. As this manual contains the product warranty card, please keep it in a safe place.

CONTENTS

FOR INFORMATION

SAFETY INFORMATION	4
Electrical Safety.....	4
Installation Safety.....	5
Operation Safety.....	5
Others.....	7
PARTS NAME	8

MAINTENANCE

INSTALLATION	18
Uninstallation Existing Toilet Seat	19
Installation the Product	19
CLEANING METHOD	21
Nozzles.....	21
Product Body.....	21
Uninstallation the Product	22
MAINTENANCE	23
Freezing Protection Function.....	23
FILTER REPLACEMENT METHOD	24

HOW TO USE

KEEP IN MIND	11
PREPARATIONS	12
OPERATION/INDICATION PART	13
HOW TO USE	16
For Rear Cleansing	16
For Front Cleansing	17

OTHERS

TROUBLESHOOTING	25
SPECIFICATION	27
WARRANTY CARD	30

SAFETY INFORMATION

Be careful to keep this safety information.

Please read this information to prevent property loss and ensure your safety.



Danger

If not observed, serious injury or even death may occur as a result.



Warning

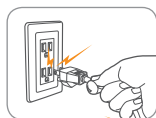
If not observed, serious physical injury or property damage may occur as a result.



Caution

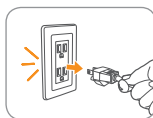
If not observed, minor physical injury or property damage may occur as a result.

Electrical Safety



! Do not use a damaged power cord or plug, and loose outlet.

Otherwise, electric shock or fire may occur as a result.



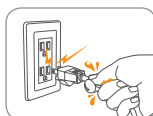
! Please connect the power plug to a dedicated grounded electrical outlet.

Otherwise, electric shock or fire may occur as a result.



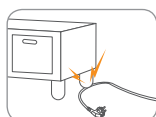
! Do not carry the unit by its power cord.

Otherwise, electric shock or fire may occur as a result.



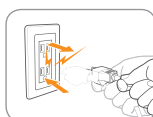
! Do not touch the power plug with a wet hand.

Otherwise, electric shock or fire may occur as a result.



! Do not forcefully bend the power cord or put it under a heavy object to prevent it from being damaged or deformed.

Otherwise, electric shock or fire may occur as a result.



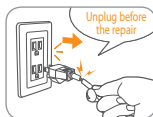
! Do not connect and pull out the power plug repeatedly.

Otherwise, electric shock or fire may occur as a result.



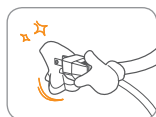
! If the electric outlet is wet, carefully unplug the unit and let the electric outlet completely dry before subsequent use.

Otherwise, electric shock or fire may occur as a result.



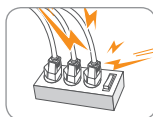
! Unplug the product before repair, inspection, or parts replacement.

Otherwise, electric shock or fire may occur as a result.



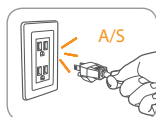
! Remove any dust or water off in the pin and contacts of the power plug.

Otherwise, electric shock or fire may occur as a result.



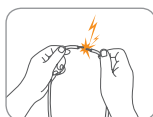
! Do not plug into an outlet that is being used by several other appliances. Use an electrical outlet dedicated.

Otherwise, fire may occur as a result.



! When you don't use for a long time, close the main water supply valve and unplug.

Otherwise, electric shock or fire may occur as a result.



! Do not attempt to repair or modify the power cord at your discretion.

Otherwise, electric shock or fire may occur as a result.



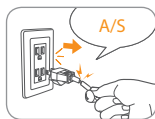
Danger



Warning



Caution



- !** In the case the power cord is damaged, do not replace the cord yourself. Call Service Center to have it replaced.

Otherwise, electric shock or fire may occur as a result.

Installation Safety



- !** Do not install near a heating device.

Otherwise, fire may occur as a result.



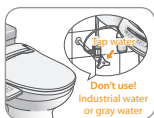
- !** Avoid installing the product in places where the air is damp, dust is accumulated, or water drops.

Otherwise, electric shock or fire may occur as a result.



- !** Do not place or use the inflammable gases, nor the flammable materials near the product.

Otherwise, electric shock or fire may occur as a result.



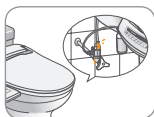
- !** Use tap water as a main water.

Industrial water or gray water, if used as main water, may cause skin damage or diseases.



- !** Don't connect the main water to the warm water pipe.

Otherwise, malfunctions or accidents may occur as a result (Make sure to connect to cold tap water pipe).



- !** After installation, make sure to check the water supply connections for leaks.

Rubber packing should be applied to the connection hose.



- !** Do not install the bidet in a location exposed to direct sunlight.

Otherwise, deformation or discoloration may occur as a result.

Operation Safety



- !** If the steam cleaner produces a strange noise, flaming smell, or smoke, immediately unplug from the electrical outlet and call our Service Center.

Otherwise, electric shock or fire may occur as a result.



- !** Do not insert a wire or sharp object in any gap of the product or the warm air outlet.

Otherwise, electric shock, fire, or product damage may occur as a result.

SAFETY INFORMATION

Operation Safety



! Do not place an electric heater near the product or dispose of any flamed material such as lit cigarettes in the toilet.

Otherwise, fire or product deformation may occur as a result.



! Do not place any containers with water, medicine, food, small metallic objects, or any flammable material on the top of the product.

In the case foreign material gets inside the product, electric shock, fire, product damage may occur as a result.



! Do not use the product where excessive moisture exists or do not splash water on the product.

Otherwise, electric shock or fire may occur as a result.



! Do not use the product if it is not working properly.

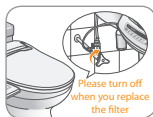
* Please unplug immediately, and call our service center after closing the main water supply valve.

Electric shock or fire may occur as a result.



! Do not block the air dryer outlet with a hand.

Otherwise, burns or fire may occur as a result.



! Please turn off the main water supply valve when you replace the filter.

Otherwise, electric shock or product damage may occur as a result.



! For children, the elderly, and those who cannot adjust the temperature themselves or with sensitive skin, set the warm water temperature and seat temperature to "Low."

Otherwise, low temperature burns may occur as a result.

* "Low emperature burns": It means burns inflicted by contacting temperatures 40 °C or lower for an extended period of time.



! Do not use the bidet's control panel as a support or forcefully press it down.

Otherwise, product damage or malfunction may occur as a result.



! Do not stand or place a heavy object on the seat cover.

Otherwise, product damage or malfunction may occur as a result.



! Don't open/close the seat cover severely or lean.

Otherwise, product damage or malfunction may occur as a result.

* It is opened and closed slowly as 'Soft seat open and close' methods.



Danger



Warning



Caution



- ⚠ **Exercise caution not to have urine touch nozzles, air dryer outlet, or outside surface of the product.**

Otherwise, bad smell or malfunction may occur as a result.



- ⚠ **If the product is not to be used for a long time, pull out the power plug from the electrical outlet, close the main water supply valve, and drain the water in the water tank.**

(See P.22)

Others



- ⚠ **While taking a shower or cleaning the bathroom, pull out the power plug from the electrical outlet and exercise caution not to have water or detergent splashed on the bidet.**

Otherwise, electric shock or fire may occur as a result.

* In the case foreign material gets inside the product, pull out the power plug from the electrical outlet, turn off the main water valve, and call the Coway Service Center.



- ⚠ **Don't separate the bidet body and the bidet seat.**

Otherwise, electric shock, fire, or product damage may occur as a result.



- ⚠ **Do not disassemble, repair, or modify the product at discretion.**

Otherwise, electric shock, fire, or product damage may occur as a result.



- ⚠ **Don't pull out the bidet hose or the connection hose severely.**

Otherwise, leaks or malfunction may occur as a result.



Benzene, thinner, alcohol

- ⚠ **Unplug the system before you clean it and do not splash water directly on the bidet or don't use thinner, or benzene, chemicals, or hydrochloric acid detergent.**

Otherwise, metal parts may corrode or the bidet body may have discoloration or scratch as a result.

* Use soft cloth or sponge to clean the bidet when you clean.



Tips

This product is exclusively for use in a bathroom. Do not use the product for other purposes not listed in the User's Manual (for abnormal use not intended by the manufacturer).

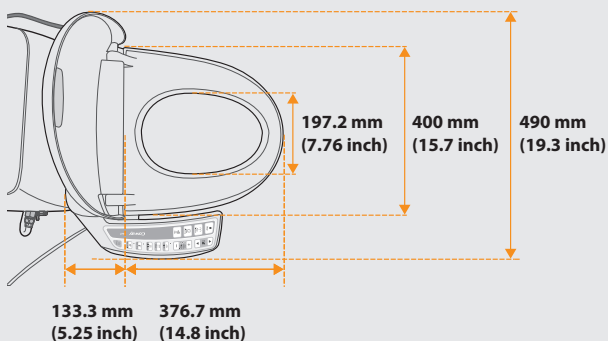
PARTS NAME

Dimensions

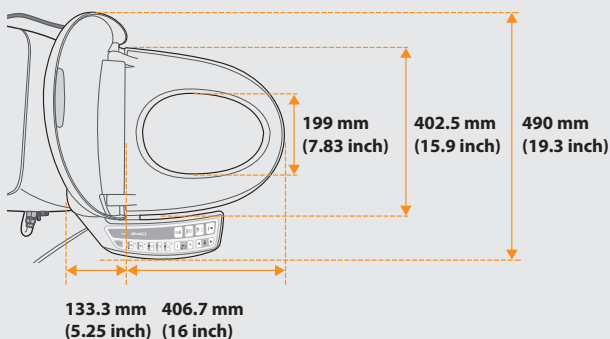
The toilet dimensions must be within those shown below.

Do not install this product on a toilet that does not meet these dimensional requirements.

Round type

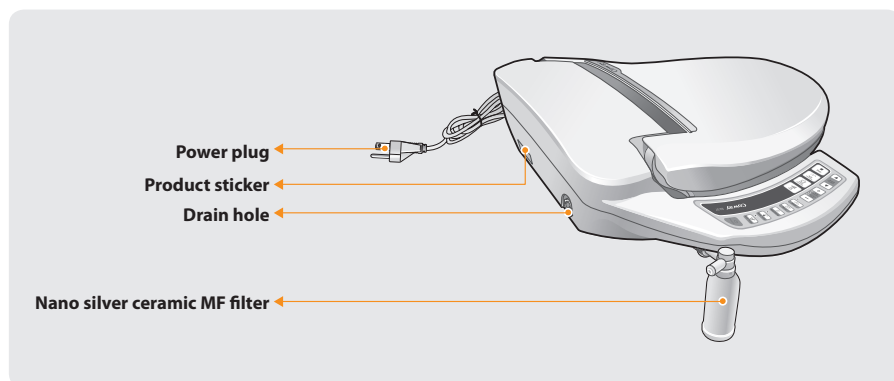


Elongate type



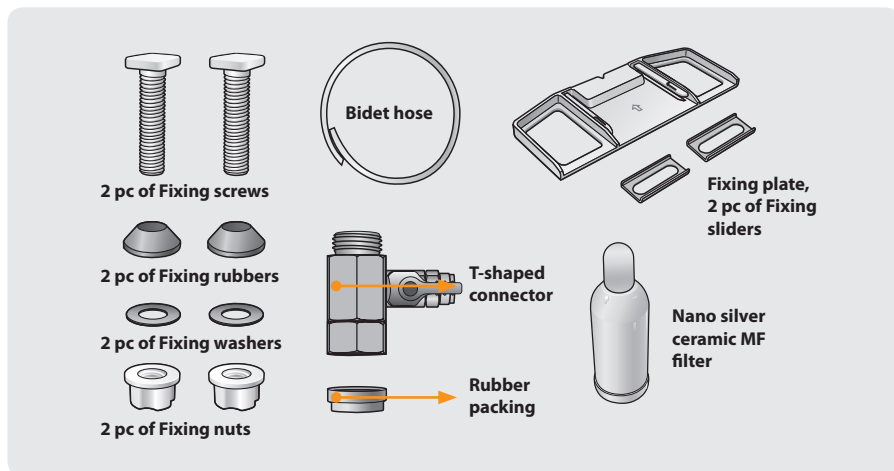
Distance of fixing hall



| Front |**| Rear |**

PARTS NAME

| Installation Material |



■ Grounding

This product must be grounded, in the event of an electrical short circuit, ground reduces the risk of electrical hazards by providing an escape wire for the electric current. The power cord has grounding wire and a three-blade grounding plug (shown below). Do not use an adapter with the product's power plug, or use any other methods to connect the plug to an improperly configured outlet. The Power source to which the product connected must be **120 V, 60 Hz with an minimum current rating of 10 A**. The outlet must be properly installed and grounded, and have three slot receptacle (shown bellows). If it is necessary to use an extension cord, use only a three wire extension cord that has a three-blade grounding plug. The extension cord must be rated 120V, 10A.

⚠ Improper use of the grounding plug can result in a risk of electric shock.



KEEP IN MIND

■ Connect the power.

Turn on by connecting the power plug to the electrical outlet and pressing the power selection button on the control panel. The bidet works normally only when the electricity is connected.

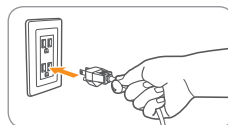


Tips



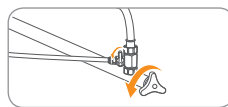
This product is for 120 V~ 60 Hz only.

Please connect the power plug to a dedicated grounded electrical outlet for 120 V~ 60 Hz .



■ Open the main water supply valve.

The main water must be supplied to operate the bidet normally.



■ Check whether the product is in power saving mode before use.

- When there isn't a seat sensor sensing and a button operation, if you set the power saving mode.
 - After passing about 1 minute : The warm water/seat temperature setting becomes as a 'Low' status.
 - After passing about 30 minutes : The product is switched to the power saving status when the indicator in the control panel is putted out.
- In the power saving mode, the power indicator is turned off. Press any button to switch the product to the waiting mode and then use the bidet.
- If the power indicator is not turned on when a button is pressed on the control panel, as the power is turned off, please turn on the power before use.



PREPARATIONS

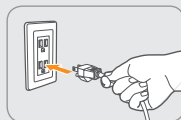


Tips



This product is for 120 V~ 60 Hz only.

Please connect the power plug to a dedicated grounded electrical outlet for 120 V~ 60 Hz .



■ After installation

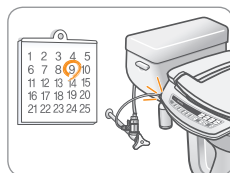
Please check whether the water leaks or not in the connection part of the T-shaped connection pipe. You must insert the rubber packing between the T-shaped connection pipe, the water pipe, and the water tank hose.



■ Periodic filter replacement

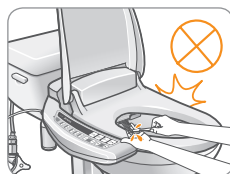
It is important to replace the filter periodically for the clean rinsing. If the filter is overused beyond its service life, the filter performance deteriorates, resulting in cleansing water that is not filtered properly. Please keep the filter replacement cycle.

* Filter replacement cycle : Every 4 months



■ If the bidet has not been used for a long time

When you don't use the product for a long time, use it after replacing the filter and cleaning the products such as an air dryer outlet, a nozzle, a seat according to each cleaning methods (See P.21).



Tips

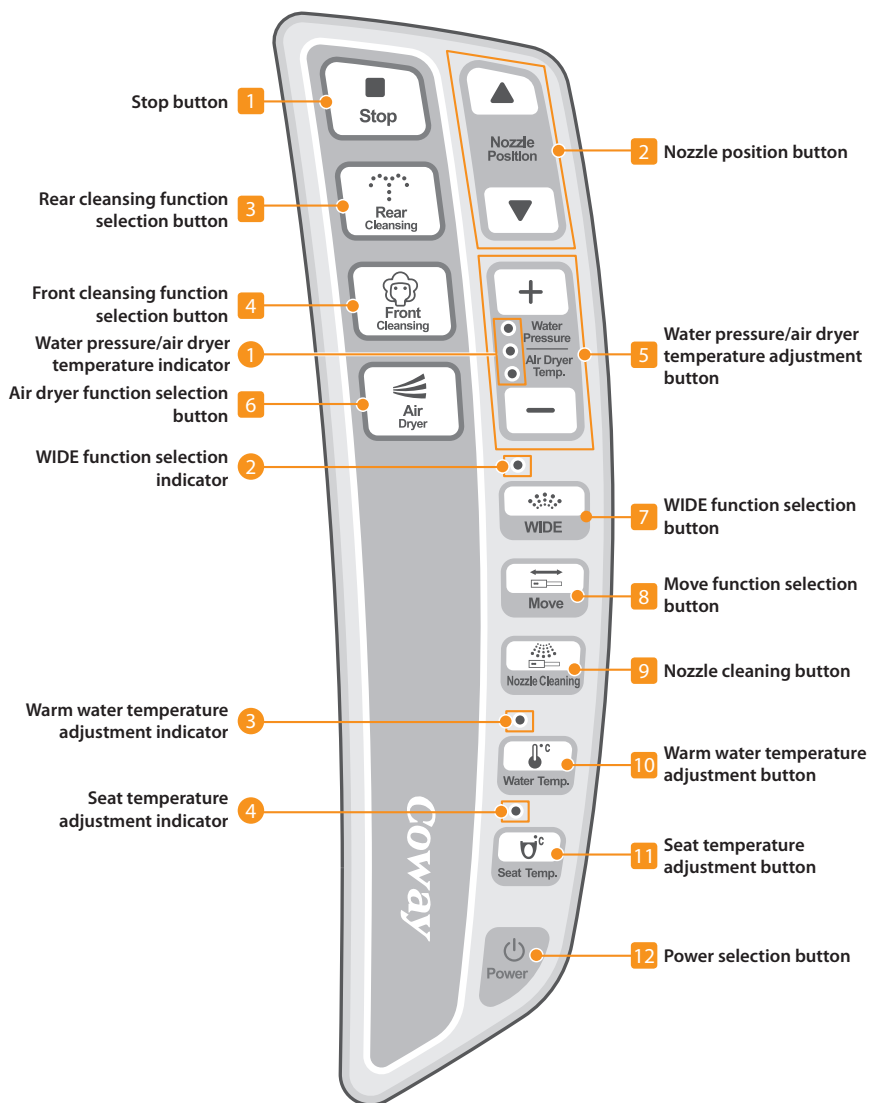
► Remove the protective film from the control panel before use.

OPERATION/INDICATION PART

| Indication Part/Operation Part |

● Indication part

■ Operation part



OPERATION/INDICATION PART

| Indication Part |



1 Water pressure/air dryer temperature adjustment indicator

If you press the water pressure/the air dryer temperature adjustment button, the indicator is turned on in the step1→step2→step3 order.

- * It is used as the water pressure adjustment indicator when you operate the rear cleansing/front cleansing function, and it is used as the air dryer temperature adjustment indicator when you operate the drying function.



2 WIDE function selection indicator

When you press the wide function selection button, indicator is turned on (Straight line (Green)Step1→(Orange)→Step2(Red)).



3 Warm water temperature adjustment indicator

When you press the warm water temperature adjustment button, the temperature lamp is turn on (L(Green)→M(Orange)→H(Red)Off).



4 Seat temperature adjustment indicator

When you press the seat temperature adjustment button, the temperature lamp is turn on. (L(Green)→M(Orange)→H(Red)Off).

| Operation Part |



1 Stop button

Stops all operating functions.



2 Nozzle position button

Use when you want to adjustment the nozzle position during the operation of the rear cleansing/front cleansing function. When you press the nozzle position button, you can adjust the nozzle position as 5 steps.



3 Rear cleansing function selection button

Use it to select the desired rear cleansing function.



4 Front cleansing function selection button

Use it to select the desired cleansing function for woman.



5 Water pressure/air dryer temperature adjustment button

If you press the water pressure/the air dryer temperature adjustment button, the temperature lamp is turned on as the step1→step2→step3 order.



6 Air dryer function selection button

Use it to select the desired air dryer function. It helps dry the wet after using the rear cleansing/front cleansing function.

Operation Part



7 WIDE function selection button

Use it if you want to control the water ejection range when you use the cleansing function. You can select the range of the force of the flowing water of 3 steps as straight line→step1→step2 using wide function selection button. Whenever you press the button, the indicator of the selected current ejection range is turned on.



8 Move function selection button

Use it to select the desired move function. When you press the move function selection button, as the nozzle is moved back and forth while you operate the rear cleansing/front cleansing function, you can clean the more widen areas.



9 Nozzle cleaning button

Use it when you want to clean the nozzle.

If you press the nozzle cleaning button, as the nozzle come forth and stop, you can clean conveniently (See P.21).



10 Warm water temperature adjustment button

Use it when you want to adjustment the warm water temperature. When you press the warm water temperature adjustment button, you can adjust the water temperature(L→M→H→Off).



11 Seat temperature adjustment button

Use it when you want to adjustment the seat temperature. When you press the seat temperature adjustment button, you can adjust the seat temperature(L→M→H→Off).



12 Power selection button

Use it to turn the product ON/OFF. When you press the power selection button during the front cleansing/rear cleansing function operating, the operating function is stopped and it is switched to the standby status.



HOW TO USE

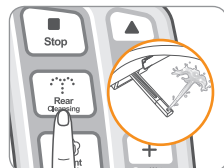
| For Rear Cleansing |

■ Rear cleansing

Sit on the seat and press the rear cleansing function selection button on the remote control.



- The cleansing water is ejected for about 1 minute and then automatically stopped.
- An automatic nozzle cleaning is performed for about 5 seconds after cleansing when the nozzle retracts itself.

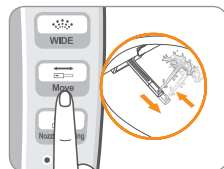
- * Adjust the nozzle position by pressing the nozzle position   button.
- * Press the wide function selection button to adjust the desired water ejection range.
- * If the rear cleansing function selection button is pressed again while in cleansing operation, additional rear cleansing starts again for another 1 minute.
- * While in cleansing, users can adjust the water temperature, water pressure, and nozzle position according to their preference.



■ Move



Press the move function selection button on the control panel.

- The nozzle moves back and forth, providing a wider range of cleansing.
- * It will be worked continuously while the cleansing function is operated.
- * You can adjust the nozzle position by pressing the nozzle position   button.
- * To stop the move function, press the move function selection button again.



■ Air dryer

Press the air dryer function selection button on the remote control.

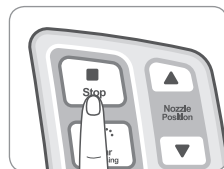
- Warm air blows for about 2 minutes to dry the wet part.
- * If you wipe out the wet before turning on the air dryer function, you can finish drying faster.
- * You can adjust the air dryer temperature by pressing the water pressure/air dryer   buttons.
- * If the air dryer function selection button is pressed again while in drying operation, additional drying starts again for another 2 minutes.
- * If the air dryer function selection button is pressed while in cleansing operation, the cleansing function is stopped and drying starts immediately.



■ Stop

If you want to stop the operation in use, press stop button.



- It stops all operating functions.
- * The air dryer function is stopped in 2 seconds after the stop button is pressed.

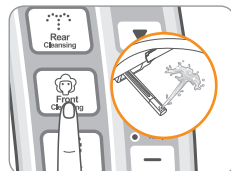


| For Front Cleansing |

■ Front cleansing



Sit on the seat and press the front cleansing function selection button on the remote control.

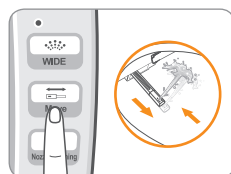
- The cleansing water is ejected for about 1 minute and then automatically stopped.
- An automatic nozzle cleaning is performed for about 5 seconds after cleansing when the nozzle retracts itself.
- * Adjust the nozzle position by pressing the nozzle position   button.
- * If the front cleansing function selection button is pressed again while in cleansing operation, additional front cleansing starts again for another 1 minute.
- * While in cleansing, users can adjust the water temperature, water pressure, and nozzle position according to their preference.



■ Move



Press the move function selection button on the control panel.

- The nozzle moves back and forth, providing a wider range of cleansing.
- * It will be worked continuously while the cleansing function is operated.
- * You can adjust the nozzle position by pressing the nozzle position   button.
- * To stop the move function, press the move function selection button again.



■ Air dryer

Press the air dryer function selection button on the remote control.

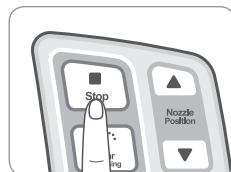
- Warm air blows for about 2 minutes to dry the wet part.
- * If you wipe out the wet before turning on the air dryer function, you can finish drying faster.
- * You can adjust the air dryer temperature by pressing the water pressure air dryer   buttons.
- * If the air dryer function selection button is pressed again while in drying operation, additional drying starts again for another 2 minutes.
- * If the air dryer function selection button is pressed while in cleansing operation, the cleansing function is stopped and drying starts immediately.



■ Stop

If you want to stop the operation in use, press stop button.

- It stops all operating functions.
- * The air dryer function is stopped in 2 seconds after pressing the stop button.



INSTALLATION

■ Installing the product

Tighten the fixing screws firmly so that the bidet body won't be shaky on the toilet.



■ Product installation place

As the bidet is installed on the toilet, please install not to have water splashed on the bidet.



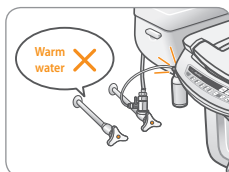
■ After installation

Keep the removed existing toilet seat in a shaded place to prevent its damage.



■ Cold water pipe

Make sure to connect the bidet to cold water pipe (If the product is connected to warm water pipe, the filter and hoses of the bidet may be damaged).



Tips

- ▶ To maintain the optimal product performance, consult a Coway engineer for detailed installation methods.
- ▶ There may be some water remaining inside the filter which was used to test the product during the inspection process at the factory.
 - The remaining water does not mean that the product was previously used.

Uninstallation Existing Toilet Seat

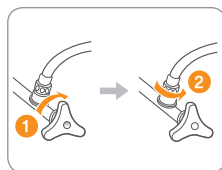
1. Remove the fixing nuts of the existing seat and separate the existing toilet seat ① and the seat cover ②.

* Keep the removed seat and seat cover in a shaded place.



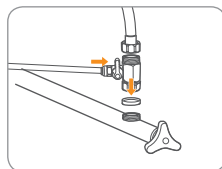
Installation the Product

1. Turn off the main water supply valve ① and separate the existing water tank hose ②.



2. Connect the rubber packing, T-shaped connector, and water tank hose in order to the existing tap water pipe.

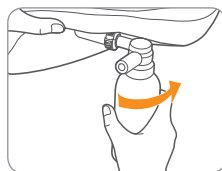
- * Please connect the bidet hose to the T-shaped connector.
- * Please insert the rubber packing between the water pipe and the T-shaped connector necessarily. Firmly rotate the nuts below and on top of the T-shaped connector to the end clockwise.



3. Please connect MF filter to the product body.

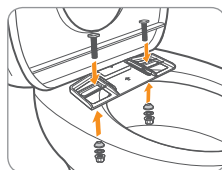
* Please assemble by rotating the MF filter on the filter holder in the lower left side of the bidet body.

⚠ If the MF filter is assembled completely, as the bidet may not function normally, please be careful.



4. Put the fixing plate and the fixing slider on the bidet as the figure. Insert the fixing screw to the filter holder, push the fixing rubber and the fixing washer, and tighten the fixing nuts.

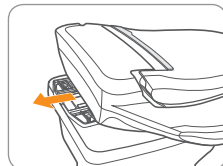
⚠ Tighten the fixing screws firmly so that the bidet body won't be shaky on the toilet. Users may fall off the seat and get injured.



INSTALLATION

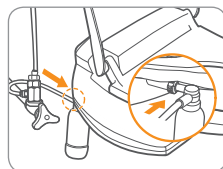
| Installation the Product |

5. Please install by adjusting the rear of the body to the fixing plates and pushing the product back.

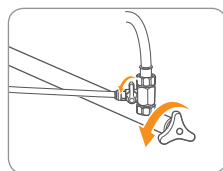


6. Connect the T-shaped connector and the connected bidet hose to the bidet body.

* Please shorten the bidet hose as soon as possible. If the bidet hose is long, it may cause noises.



7. Open the main water supply valve.

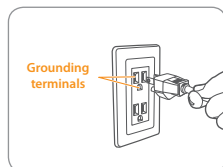


8. Connect the power plug to the electrical outlet.

* Make sure to use a grounded electrical outlet. In the case of short circuit, grounding prevents electric shock or injury.

⚠ Make sure to use a dedicated electrical outlet with grounding terminals.

⚠ If it is unavoidable to use an extension cord, use one with grounding terminals for power rating of 250 V, 7 A or higher.



CLEANING METHOD

| Nozzles |



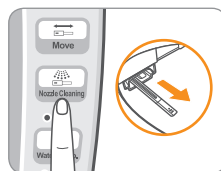
Tips

- ▶ If excessive force is exerted on the nozzle when cleaning it, the nozzle may not be working properly or be broken. Hold the nozzle lightly to clean it.
- ▶ When you clean the nozzle, the nozzle cleaning water is sprayed (But the nozzle cleaning water doesn't be sprayed and only nozzle is extended in the feed water stop status).

1. Press nozzle cleaning button on the right side of the bidet.

The nozzle cleaning water is sprayed and the front cleansing nozzle sticks out to its full length.

Clean the front cleansing nozzle.



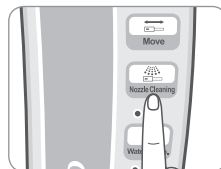
2. Press nozzle cleaning button one more.

- The nozzle cleaning water is sprayed and the front cleansing nozzle retracts itself, and the rear cleansing nozzle sticks out to its full length.
- Clean the rear cleansing nozzle.



3. If you press the stop button on the remote control or nozzle cleaning button on the product once more after cleaning the rear cleansing nozzle, the nozzle cleaning water is sprayed and the rear cleansing nozzle retracts itself.

- If no button is pressed for 2 minutes after the nozzle cleaning starts, the nozzle retracts itself automatically.



| Product body |

■ Apply the neutral detergent to a soft cloth or sponge and clean the product.

- * If you use the detergent except for the neutral detergent, the product deformation and the damage may be occurred.



Tips

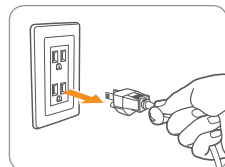


Do not use thinner, or benzene. Do not clean the product using coarse scrub or detergent with abrasives.

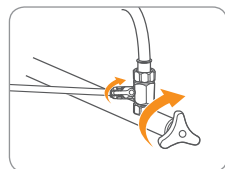
CLEANING METHOD

Uninstallation the Product

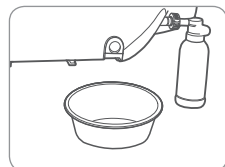
1. Unplug the power plug from the outlet.



2. Close the main water supply valve.

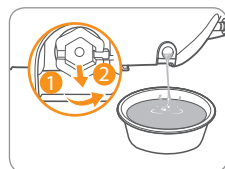


3. Place a big wash basin (1 L or more) under the rear drain hole of the bidet.



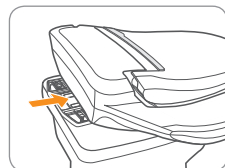
4. Turn the drain stopper ❶ counter clockwise by 90° and pull out it in the direction of the arrow ❷ to remove it.

- Please assemble the drain stopper to the product again after draining.



5. Please separate the product from the fixing plate by pulling out it forward.

- Please pull out the power plug and separate the bidet hose before separating the product.
- When storing the product, separate the filter fixing stopper and MF filter from the bidet and store them with installation materials.
- Exercise caution not to lose fixing screws and fixing nuts.



Tips

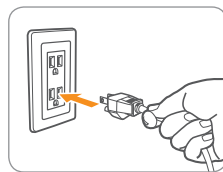
When you don't use the product for a long time, please pull out the power cord after turning off the main water supply valve and emptying the water inside of the water tank.

MAINTENANCE

It is recommended to check the status of the bidet frequently in order to use the bidet safely.
Please check the following items frequently to maintain the status of the bidet at its best.

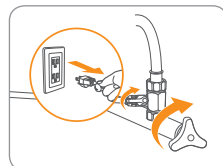
| Freezing protection function |

- Coway bidet has a built-in anti-freezing program.
When the water temperature of the water tank falls below 5 °C, the heater automatically operates to prevent freezing burst.
- * Check that the power is turned on. If the power is turned off, the anti-freezing program does not work and the bidet may have freezing burst or malfunctions in a cold environment.

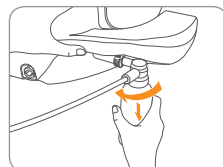


FILTER REPLACEMENT METHOD

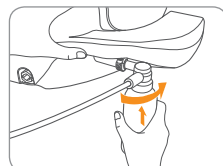
1. Please unplug the power plug and turn off the main water supply valve.



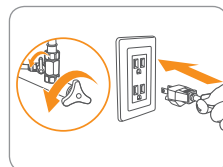
2. Separate the MF filter from the filter holder by rotating the MF filter to replace to the arrow direction.



3. Please rotate and insert new MF filter to the filter holder like the next arrow direction to the end not to be shaken.



4. Use it after opening the main water supply valve and plugging in the cord.



TROUBLESHOOTING

The bidet may operate abnormally due to the minor causes not because of the product malfunction but because of the fact that the user is not familiar with the product use. In such a case, problems can be solved easily even without the help from the Service Center by checking the following items. If you can't solve the problem after checking the following items, please call the Service Center.

Symptom	Check	Measures to take
The product is not working.	<ul style="list-style-type: none"> Is the power plug connected to the electrical outlet? 	Plug in the power cord.
	<ul style="list-style-type: none"> Is it a power failure? 	Check whether it is a power failure.
	<ul style="list-style-type: none"> Is the control panel turned off? 	Check whether buttons other than the Power button work well. If one of the other buttons is pressed down, the Power button does not work. In this case, call our service center.
Water is not ejected.	<ul style="list-style-type: none"> Does the main water supply valve closed? 	Open the main water supply valve.
	<ul style="list-style-type: none"> Is the nozzle clogged with foreign material? 	Remove the foreign material by cleaning the nozzle opening with a toothbrush.
	<ul style="list-style-type: none"> After installation, water is not ejected. 	Check whether the suspension of water supply is performed or not. (It takes about 1 – 2 minutes for the water tank to be filled with water after installation before water can be ejected.)
The water pressure is weak.	<ul style="list-style-type: none"> Is the water pressure set too low? 	Adjust the water pressure properly.
	<ul style="list-style-type: none"> Is the nozzle clogged with foreign material? 	Remove the foreign material by cleaning the nozzle opening with a toothbrush.
	<ul style="list-style-type: none"> Is the filter clogged with foreign material? 	Replace the filter correctly.
The seat and water are not warm.	<ul style="list-style-type: none"> Isn't the seat and warm water temperature adjustment button set to "OFF" status? 	Please adjust as the proper temperature by pressing the seat, the warm water temperature adjustment button.

TROUBLESHOOTING

Symptom	Check	Measures to take
The air from the air dryer is cold.	<ul style="list-style-type: none"> Isn't the air dryer temperature adjustment button set to "OFF" status? 	Please adjust as the proper temperature by pressing the air dryer temperature adjustment button.
Water leaks in areas other than the nozzles.	<ul style="list-style-type: none"> Water leaks on the T-shaped connector. 	Check that the rubber packing is inserted in the T-shaped connector and firmly tighten the nut again.
	<ul style="list-style-type: none"> Water leaks on the connection part of the bidet hose. 	Push the bidet hose to the connection part completely.
	<ul style="list-style-type: none"> Water leaks on the filter. 	Check whether the filter was damaged or not.
Water comes out while the bidet is not in use.	<ul style="list-style-type: none"> What water comes out between the nozzles after cleansing is to clean the nozzles, not a malfunction. 	
	<ul style="list-style-type: none"> In some cases, water drops around the nozzles may fall down in the toilet. It is that the water drops remaining on the nozzle surface after the nozzle cleaning drop into the toilet. It is not a malfunction. 	
If you plug in the power cord, the rear cleansing nozzle come out and go in.	<ul style="list-style-type: none"> It is the initialization process of the nozzle position, not a product malfunction. 	
There is a noise coming from the bidet.	<ul style="list-style-type: none"> While the water heater is in operation, a noise is generated in a normal condition. 	



Tips

- ▶ If the bidet is in power saving mode, as the seat and the warm water temperature are set to low temperature, it may be felt relatively cold when you sit on. If the bidet power saving mode is cancelled, the temperature set at the last use is maintained.
- ▶ For canceling the power saving mode, see page 10 on this manual.

SPECIFICATION

Product name		Coway Bidet
Model name		BA07-R/E
Power rating		120 V~ 60 Hz
Power consumption		850 W
Power cord		1.2 m (47 inch) long
Water pressure		0.075 MPa - 0.68 MPa
Product dimensions	BA07-R	490 mm (W) X 510 mm (D) X 150 mm (H)
	BA07-E	490 mm (W) X 540 mm (D) X 150 mm (H)
Weight (NET)		5.7 kg
Warm water cleansing device	Rear cleansing	Maximum 0.7 L/min, automatic nozzle cleaning function
	Front cleansing	Maximum 0.7 L/min, automatic nozzle cleaning function
	Timing	Rear cleansing 1 min, Front cleansing 1 min
	Water pressure control	Micom control, 3 level control
	Wide (spray range control)	3 level spray range control(straight-level 1-level 2)
	Warm water temperature adjustment	4 levels (off : tap water temperature, low : 34 °C, medium : 36 °C, high : 38 °C)
	Power consumption of cistern heater	800 W
	Cistern capacity	0.8 L
Warm air dryer	Safety device	Bi-metal, temperature sensor, temperature fuse(overheating prevention)
	Warm air temperature control	3 levels
	Timing	Air dryer 2 min
	Power consumption of dryer heater	210 W
Warm seat	Safety device	Bimetal, temperature fuse(overheating prevention)
	Seat temperature control (after seating)	4 levels (off : room temperature, low : 34 °C, medium : 37 °C, high : 40 °C)
	Power consumption of dryer heater	50 W
MF filter	Safety device	Temperature sensor, temperature fuse(overheating prevention)
	Life span	4 months (2.5 ton/month, impurity rate : under 0.5 NTU)
Accessories	Dimension	(L) 136 mm x (Ø) 48 mm
	Installation materials	T-Shaped connector, Rubber packing, Bidet hose, 2 Fixing washers, 2 Fixing screws, 2 Fixing nuts, 2 Fixing rubbers, Fixing plate, 2 Fixing sliders, MF filter
Other function		Nozzle position adjustment, Move, Nozzle cleaning, Seat locking mode, Remote control auto power saving mode.
Temperature		0 °C - 40 °C

- * Manufactured by WOONGJIN CUCHEN CO., Ltd.
- * These specifications may be changed to improve the performance of the product.
- * Earlier clogging may occur in MF filter depending on quality and consumption of water.



MEMO

MEMO



WARRANTY CARD OR WARRANTY LETTER

ONE YEAR LIMITED WARRANTY

BIDET BA07-R/E ("PRODUCT")

Model :

Serial Number :

Customer Name :

("OWNER")

Date of Purchase :

What This Warranty Covers :

Commencing with the date of purchase of the Product and continuing for a period of one year, if manufacturing defects in the Product cause the Product to not operate properly for its intended use, then subject to the exclusions, conditions, and limitations contained herein, COWAY at its sole option will repair or replace the Product. Decisions as to the extent of repair or replacement required will be made solely by COWAY.

The remedy under this Warranty is available only for that portion of the Product exhibiting defects at the time of the warranty claim. The replacement Product as well as any remaining original Product will be warranted only for the original one year warranty period. This limited warranty applies only to Product used for an application specified by COWAY for the Product and applied in strict accordance with COWAY published specifications in effect at the time of application. IF PRODUCT IS USED FOR OTHER THAN ITS INTENDED PURPOSE, IT IS SOLD AS IS AND WITHOUT ANY EXPRESS OR IMPLIED WARRANTIES, INCLUDING OF MERCHANTABILITY OR FITNESS FOR A PARTICULAR PURPOSE.

What This Warranty Does Not Cover :

This Warranty warrants that the Product will be free from manufacturing defects which affect the ability of the Product to operate for its intended use; it is not a warranty that the Product will never require repairs or to undertake responsibilities, liabilities or obligations other than those specifically identified in the preceding section. COWAY is not responsible or liable for personal injury or property damage of any kind, even if arising from a breach of this Warranty.

Limitations and Exclusions :

TO THE EXTENT PERMITTED BY APPLICABLE LAW, COWAY DISCLAIMS ANY OTHER WARRANTY EXPRESS OR IMPLIED, THAN THAT PROVIDED FOR HEREIN. THIS WARRANTY IS IN LIEU OF AND EXCLUDES ALL OTHER WARRANTIES, GUARANTEES, CONDITIONS AND REPRESENTATIONS, EXPRESS OR IMPLIED, ORAL OR WRITTEN, STATUTORY OR OTHERWISE, INCLUDING BUT NOT LIMITED TO ANY IMPLIED CONDITIONS OR WARRANTIES AS TO THE MERCHANTABILITY OR FITNESS FOR A PARTICULAR PURPOSE OF THE COWAY PRODUCT. SOME STATES DO NOT ALLOW LIMITATIONS ON HOW LONG AN IMPLIED WARRANTY LASTS, SO THE ABOVE LIMITATION MAY NOT APPLY TO YOU. COWAY DOES NOT AUTHORIZE ANY PERSON INCLUDING ITS REPRESENTATIVES, TO MAKE ANY REPRESENTATION OR TO OFFER ANY WARRANTY, CONDITION OR GUARANTY IN RESPECT OF THE PRODUCT OTHER THAN THIS WARRANTY. THIS LIMITED WARRANTY SHALL BE THE OWNER'S SOLE AND EXCLUSIVE REMEDY AGAINST COWAY AND COWAY SHALL NOT BE LIABLE FOR ANY CONSEQUENTIAL, EXEMPLARY, SPECIAL, INCIDENTAL OR OTHER DAMAGES INCLUDING, BUT NOT LIMITED TO, LOSS OF PROFITS, AND LOSS OF USE. INCIDENTAL, CONSEQUENTIAL AND EXEMPLARY DAMAGES SHALL NOT BE RECOVERABLE EVEN IF THE REMEDIES OR THE ACTIONS PROVIDED FOR IN THIS WARRANTY FAIL OF THEIR ESSENTIAL PURPOSE. SOME STATES DO NOT ALLOW THE EXCLUSION OR LIMITATION OF INCIDENTAL OR CONSEQUENTIAL DAMAGES, SO THE ABOVE LIMITATION OR EXCLUSION MAY NOT APPLY TO YOU. COWAY SHALL NOT BE LIABLE FOR ANY DAMAGES WHICH ARE BASED UPON NEGLIGENCE, BREACH OF WARRANTY, STRICT LIABILITY OR ANY OTHER LEGAL THEORY OF LIABILITY OTHER THAN THE EXCLUSIVE LIABILITY SET FORTH IN THIS WARRANTY.

Limitations on Implied Warranties :

Any implied warranty of merchantability or fitness for a particular purpose or use, shall be limited to the duration of the foregoing express written warranty.

Conditions of Warranty :

COWAY's continuing liability under this Warranty is conditioned upon the following:

- a) The defect or damage is not caused by or is the result of: abnormal use or conditions; improper storage, unauthorized modifications or repair; misuse, neglect, accident, alteration, improper installation or other acts that are not the fault of Coway or the manufacturer of the product or that are not covered by the manufacturer's warranty;
- b) The Product has not been altered, modified or repaired without prior written approval of COWAY;
- c) The OWNER has notified COWAY in writing of any failure of the Product covered by this Warranty within thirty (30) days following such failure;
- d) There has been no misuse, abuse or negligence with respect to the Product on the part of the OWNER.

Waiver :

COWAY's failure at any time to enforce or rely upon any of the terms or conditions stated herein shall not be construed to be a waiver of its rights hereunder.

Obtaining Warranty Service and OWNER'S Duties :

If the Product fails to operate for its intended purpose, then notify COWAY or its Representative Agency, within 48 hours or within the next business day after discovery of any defect in the Product. The OWNER must give written notice to COWAY no later than thirty (30) days after a defect is discovered or should by reasonable diligence have been discovered. Claims under this Warranty will require proof of purchase by the OWNER.

